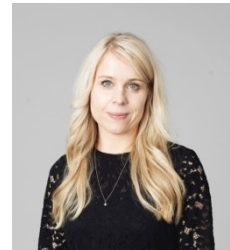


Curriculum Vitae

Louise Birkedal Glenthøj, louise.birkedal.glenthoej@regionh.dk, +45 22540222



Education

2019: Psychologist with specialization in general psychiatry (specialpsykolog).
2018: Specialist in clinical psychology and psychotherapy (specialist i klinisk psykologi og psykoterapi).
2017: PhD from University of Copenhagen.
2011: Licensed psychologist.
2008: MSc, Psychology, Copenhagen University, Institute of Psychology.

Employment

Current position, 2020: Head of researcher at Copenhagen Research Centre on Mental Health (CORE), University of Copenhagen
2017-2019: Clinical psychologist at Mental Health Centre Glostrup.
2013-2016: PhD student at Mental Health Centre Copenhagen, Research Unit.
2008-2013: Clinical psychologist at Mental Health Centre Hvidovre (maternity leave July 2009 - March 2010 and November 2012- October 2013).

Research focus

My primary research focus is on advancing the clinical assessment and psychotherapeutic treatment of patients with a psychosis-spectrum disorder. A particular focus is on using new technologies such as virtual reality therapy as an augment to psychotherapeutic practice. Additionally, my research focus comprises the assessment of neuro- and social cognitive deficits and functional impairments in psychotic disorders as well as developing targeted treatments for these deficits.

Research experience and management

Co-primary investigator (daily research leader) on four randomised, clinical trials (FOCUS, Challenge, Face your Fears, and an international psychosis prediction trial). These trials evaluate advanced psychotherapeutic interventions and clinical prediction in patients with psychosis-spectrum disorders. Co-applicant on several research grants received from TrygFoundation, The Danish Council of independent Research, the Research fund of the the Capital Region of Denmark, and the Mental Health Services in the Capital Region of Denmark.

International collaboration

Close collaboration with international experts within the field of psychiatric research, among these: Prof. Alice Medalia, Columbia University. Prof. Christos Pantelis, Melbourne University. Ass. prof. David Roberts, University of San Antonio. Senior researcher Charlie Davidson, Yale University. Prof. Barnaby Nelson, Melbourne University. Associate prof. Neil Thomas, University of Swinburne. Prof. Wim Veling, University of Groningen.

Publications

33 publications since 2013; of these 26 in peer-reviewed scientific journal, and 3 book chapters. 18 publications as first author.

Supervision and teaching

Ongoing supervision of PhD students (co-supervisor), research assistants, and psychologist students. Teacher at the specialist education in general psychiatry (specialpsykologuddannelsen). Ongoing teaching of psychologists and other clinical staff in the clinics in the Mental Health Services in the Capital Region of Denmark.

Reviewer

Reviewer for international journals such as American journal of Psychiatry, Schizophrenia Bulletin, Psychological Medicine, Schizophrenia Research etc.

Other scientific activities

2016: Visiting researcher at Yale University, early intervention facility (PRIME clinical) and University of San Antonio, Translations Care Clinic.

Scientific presentations

Oral and poster presentations at national and international conferences on mental health, e.g. Schizophrenia International Research Society (SIRS), Early Intervention in Mental Health (IEPA), and American College of Neuropsychopharmacology (ACNP).